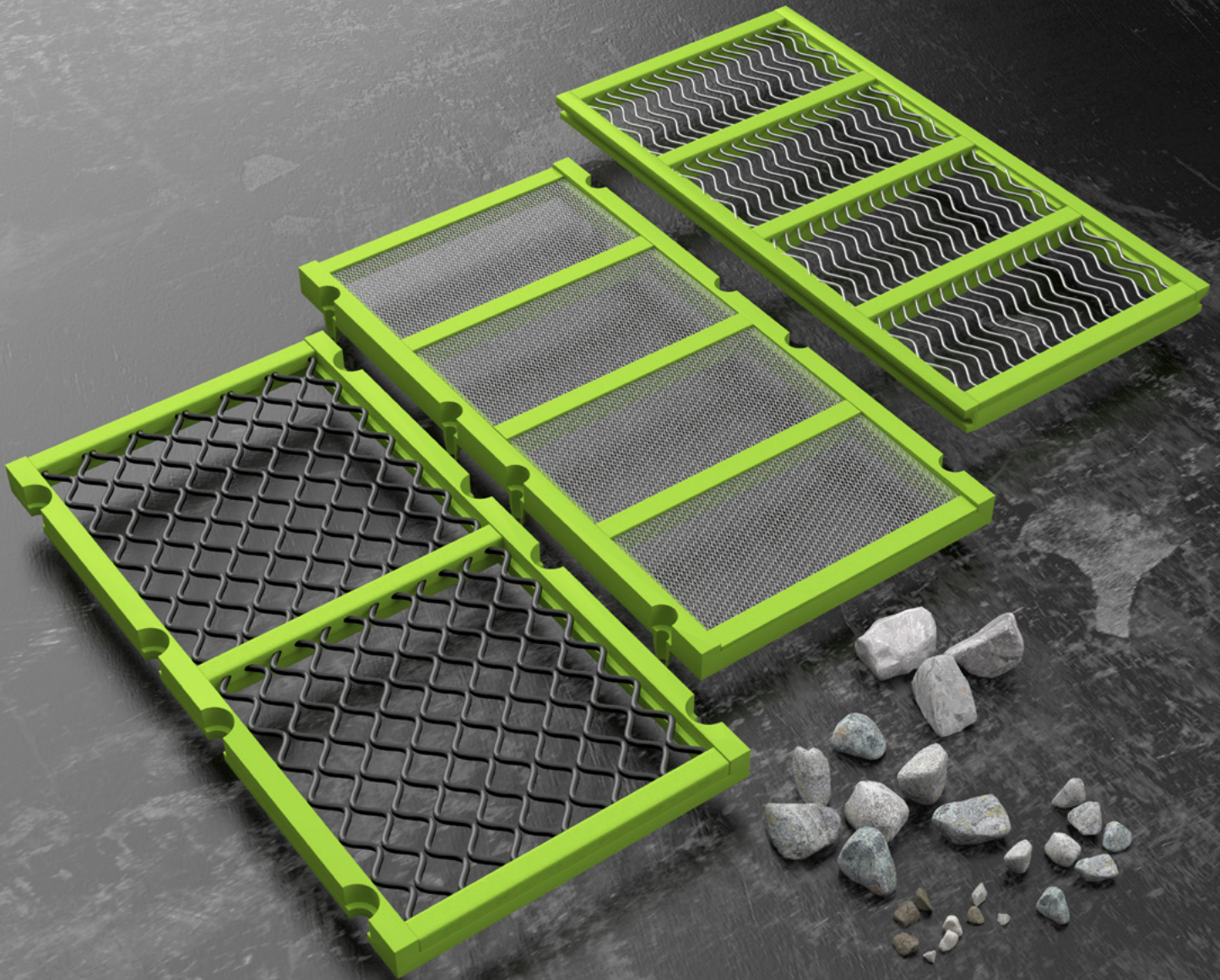


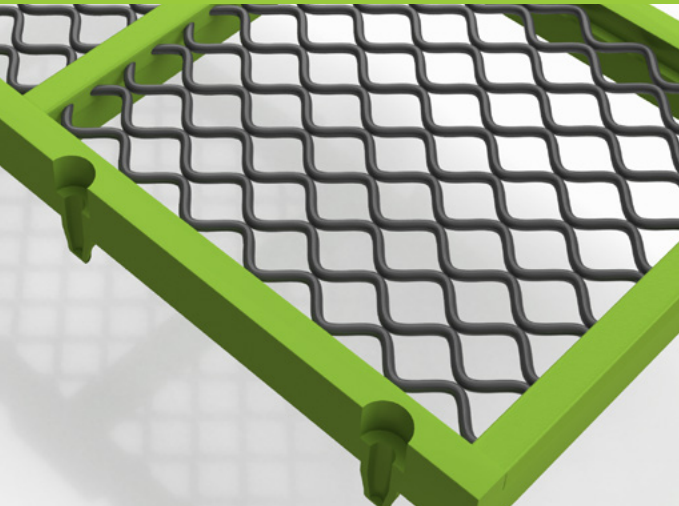
# FLEX-MAT®

## HIGH VIBRATION WIRE SCREEN

### MODULAR SERIES



### MODULAR SERIES > PRODUCT



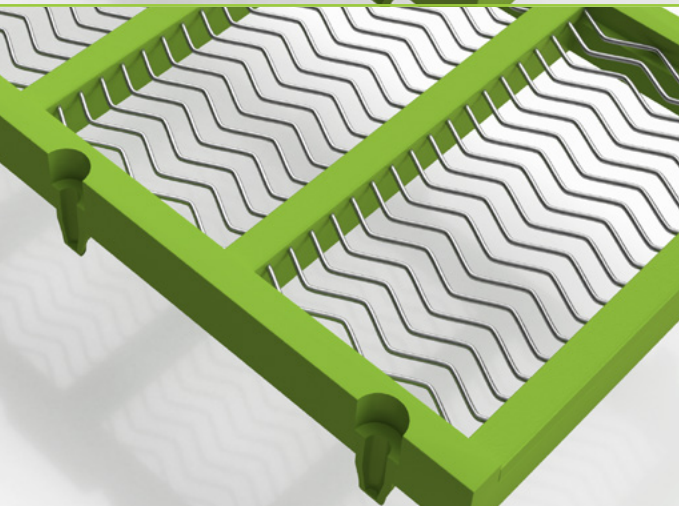
MODULAR  
SERIES

D

- Standard pattern
- Square opening
- Equivalent to square woven
- Precise sizing

> Opening Sizes

**0.059" – 1.575"**  
1.5 mm – 40 mm



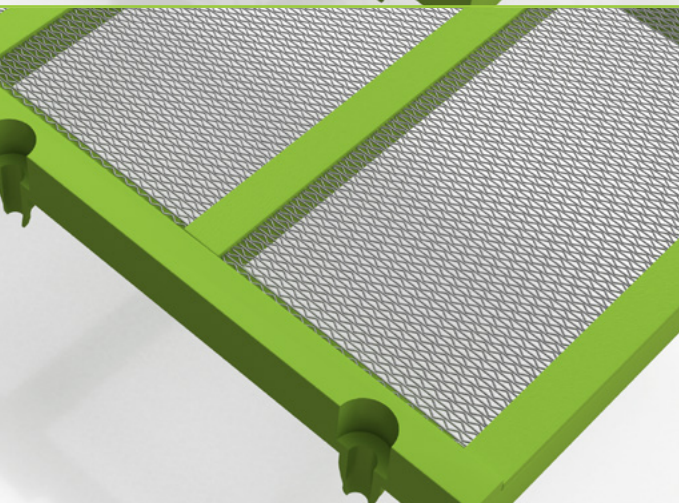
MODULAR  
SERIES

S

- Used with round or cubical-shaped material, or when precise passing is not required, FLEX-MAT S allows you to:
  - Maximize open area
  - Eliminate blinding
  - Reduce fines

> Opening Sizes

**0.059" – 1.575"**  
1.5 mm – 40 mm



MODULAR  
SERIES

T

- Ideal for particles below 0.059" or 1.5 mm
- Replaces small openings to better reduce blinding

> Opening Sizes

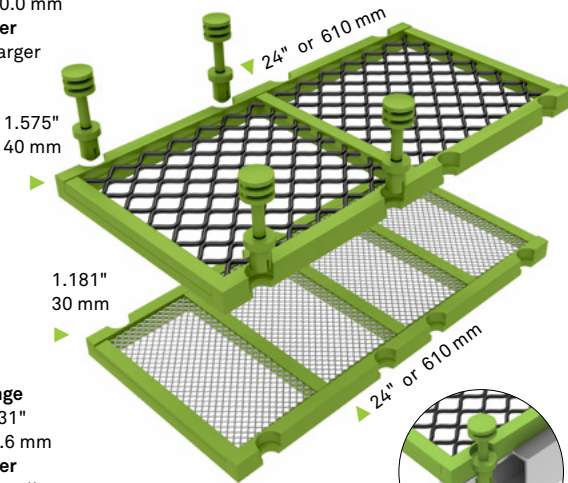
**0.020" – 0.055"**  
0.5 mm – 1.397 mm

### MODULAR SERIES > PIN TYPES

#### PIN & SLEEVE

**Opening Range**  
0.433" – 1.575"  
11.0 mm – 40.0 mm  
**Wire Diameter**  
0.192" and larger  
4.9 mm

**Available Width**  
12" or 305 mm

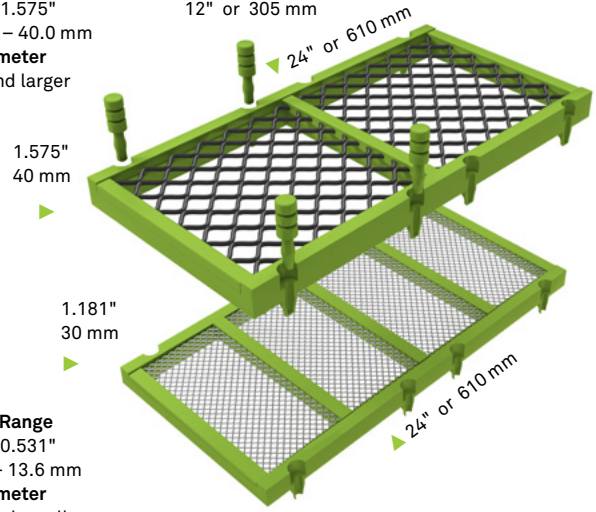


**Opening Range**  
0.020" – 0.531"  
0.5 mm – 13.6 mm  
**Wire Diameter**  
0.135" and smaller  
3.4 mm

#### PIN & LEG

**Opening Range**  
0.433" – 1.575"  
11.0 mm – 40.0 mm  
**Wire Diameter**  
0.192" and larger  
4.9 mm

**Available Width**  
12" or 305 mm

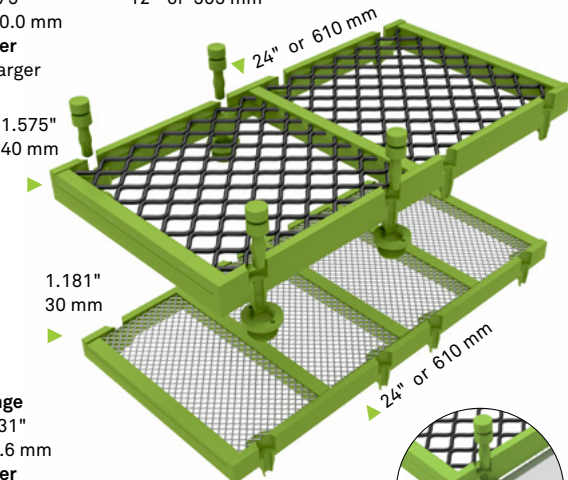


**Opening Range**  
0.020" – 0.531"  
0.5 mm – 13.6 mm  
**Wire Diameter**  
0.135" and smaller  
3.4 mm

#### PIN & LEG – MAXI

**Opening Range**  
0.433" – 1.575"  
11.0 mm – 40.0 mm  
**Wire Diameter**  
0.192" and larger  
4.9 mm

**Available Width**  
12" or 305 mm



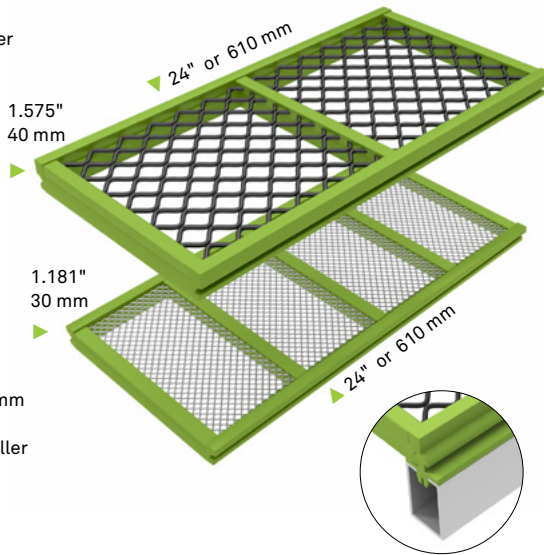
**Opening Range**  
0.020" – 0.531"  
0.5 mm – 13.6 mm  
**Wire Diameter**  
0.135" and smaller  
3.4 mm

### MODULAR SERIES > SNAP TYPES & ACCESSORIES

#### GROOVED

**Opening Range**  
0.433" – 1.575"  
11.0 mm – 40.0 mm  
**Wire Diameter**  
0.192" and larger  
4.9 mm

**Available Width**  
11.811" / 300 mm x 19.685" / 500 mm  
11.811" / 300 mm x 24" / 610 mm  
12" / 305 mm x 24" / 610 mm

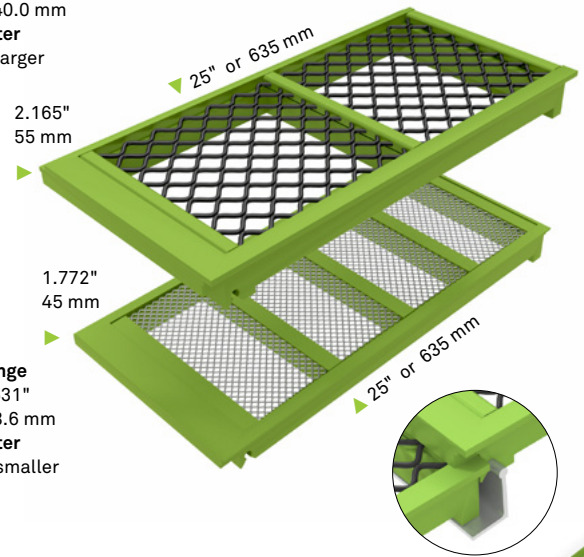


**Opening Range**  
0.020" – 0.531"  
0.5 mm – 13.6 mm  
**Wire Diameter**  
0.135" and smaller  
3.4 mm

#### STEP

**Opening Range**  
0.433" – 1.575"  
11.0 mm – 40.0 mm  
**Wire Diameter**  
0.192" and larger  
4.9 mm

**Available Width**  
12" or 305 mm

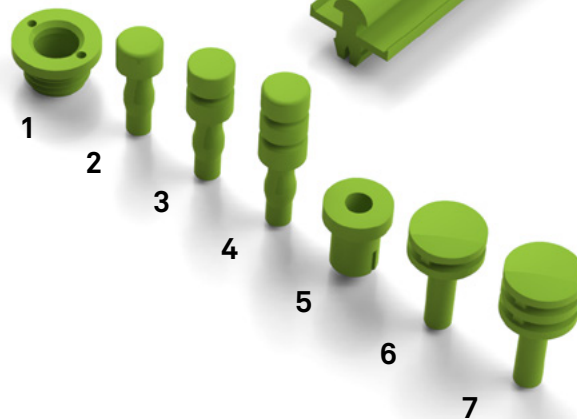


**Opening Range**  
0.020" – 0.531"  
0.5 mm – 13.6 mm  
**Wire Diameter**  
0.135" and smaller  
3.4 mm

### MODULAR ACCESSORIES

1. **Threaded insert**  
For MAXI panel frames
2. **23 mm pin head**  
For 30 mm-thick panels
3. **23 mm pin head**  
For 40 mm-thick panels
4. **23 mm pin head**  
For 50 mm-thick panels
5. **Sleeve**  
For 33 mm pin heads
6. **33 mm pin head**  
For 30 mm-thick panels
7. **33 mm pin head**  
For 40 mm-thick panels

**Knock-in bar**  
For grooved panels



### MODULAR SERIES > TRUE OPEN AREA

#### TRUE OPEN AREA CALCULATION

Polyurethane or rubber modular panel open area is calculated based on the entire surface area of the panel, providing the “True Open Area.”

- Do not use “Relative Open Area,” which is calculated only on the area where the holes exist and not on the full panel. Refer to the FLEX-MAT Modular Specification Form found on MAJOR’s digital library to find out the “True Open Area,” per specification and panel type.
- To calculate the “True Open Area” of polyurethane or rubber panels, follow this calculation:

$$\frac{\text{surface of a hole (width x length)} \times \text{number of holes (per panel)}}{\text{surface of the panel (width x length)}}$$

**SLOT**  
0.079" x 0.236"  
2 mm x 6 mm

19.9%

**SERIES D**  
0.079"  
Opening 2 mm

25.6%

AN INCREASE OF  
**28%**

**SQUARE**  
0.157" x 0.157"  
4 mm x 4 mm

15.2%

**SERIES D**  
0.157"  
Opening 4 mm

29.4%

AN INCREASE OF  
**93%**

**SLOT**  
0.500" x 2"  
12.7 mm x 50.8 mm

30.6%

**SERIES S**  
0.500"  
Opening 12.7 mm

44.9%

AN INCREASE OF  
**46%**